



P. P. K. COLLEGE (BUNDU) RANCHI

(A CONSTITUENT UNIT OF RANCHI UNIVERSITY, RANCHI)

पत्रांक... G/PPK/176C/24

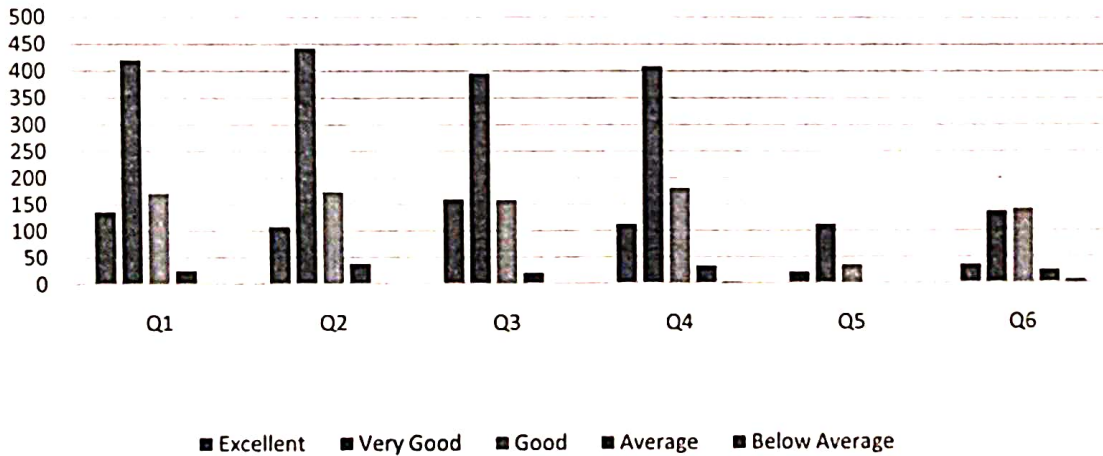
दिनांक... 24/10/2024.....

Student Feedback Analysis

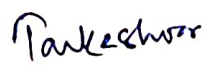
Following questionnaires:

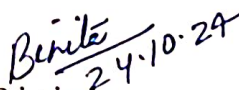
1. Has the teacher covered entire syllabus as prescribed by university?
2. Has the teacher covered relevant topics beyond syllabus?
3. Effectiveness of teacher in terms of technical content, communication skill
4. How do you rate the contents of the curricular?
5. How do you rate the lab facilities? (For labs only)
6. How do you rate the library facilities?

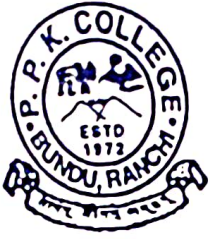
Students Feedback Analysis(2023-24)




Criteria Representative


Coordinator
Coordinator
Panch Pargana Kisan College
Bundu


Principal
PRINCIPAL
Panch Pargana Kisan College
Bundu



P. P. K. COLLEGE (BUNDU) RANCHI

(A CONSTITUENT UNIT OF RANCHI UNIVERSITY, RANCHI)

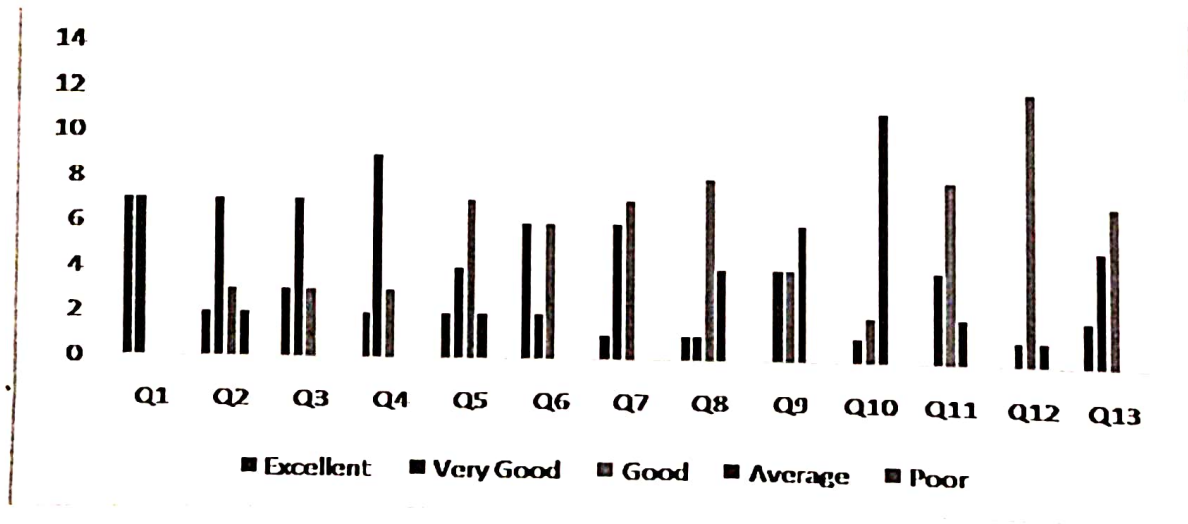
पत्रांक. 4/PPK/176B/24

दिनांक. 24/10/2024

Parents Feedback Analysis

Following questionnaires: -

1. Admission procedure
2. Fee structure
3. The quality of teaching by college
4. The examination system adopted in college
5. Infrastructure and Lab facilities
6. Academic discipline observed in the college
7. Work culture observed by you and your ward
8. Library
9. Sports and cultural activities
10. Students counseling activities
11. Fest, extra-curricular activities provided by college
12. Evaluation and feedback mechanism
13. Resources provided to students by the college



[Signature]

Criteria Representative

[Signature]

Coordinator, IQAC

IQAC

Coordinator
Panch Pargana Kisan College
Bundu

[Signature]
24.10.24
Principal

PRINCIPAL
Panch Pargana Kisan College
Bundu